



Discover this [even more luxurious and comfortable catamaran](#).

Lagoon 620 “OPAL” is an innovative solution to the needs of today's cruising yachtsman: beautiful design, strength, comfort & performance.

*OPAL is ideal for the client who want to experience [the art of living aboard in an innovative way](#).*

There is just nothing to compare to relaxing aboard this charming & luxurious catamaran. The architects Van Peteghem-Lauriot Prévost and Lagoon R&D (exterior) department and Nauta Yachts (Interior) fitted the Lagoon 620 with the latest developments in naval architecture.

Lagoon 620 OPAL with five queen size bed en-suite cabins design is very **accommodating**. Complete interior layout is elegantly incorporating wood finish, upholstery, inner liners, and more. A **functional flybridge** can also accommodate guests thanks to separate crew and reception areas. Saloon and cockpit are beautifully integrated and include “wet bar”, areas for lazing around and the option on taking delicious meals inside or out without having to make any adjustments.



## FEATURES YOU'LL LIKE:

3 Crew members

5 en-suite guest's cabins

Great array of water toys

Lagoon 620 Opal, [available for charter in Croatia](#), has **5 queen size berth cabins** (sleeps up to 10 guests), all ensuite, plus separate cabins for three professional crew members.

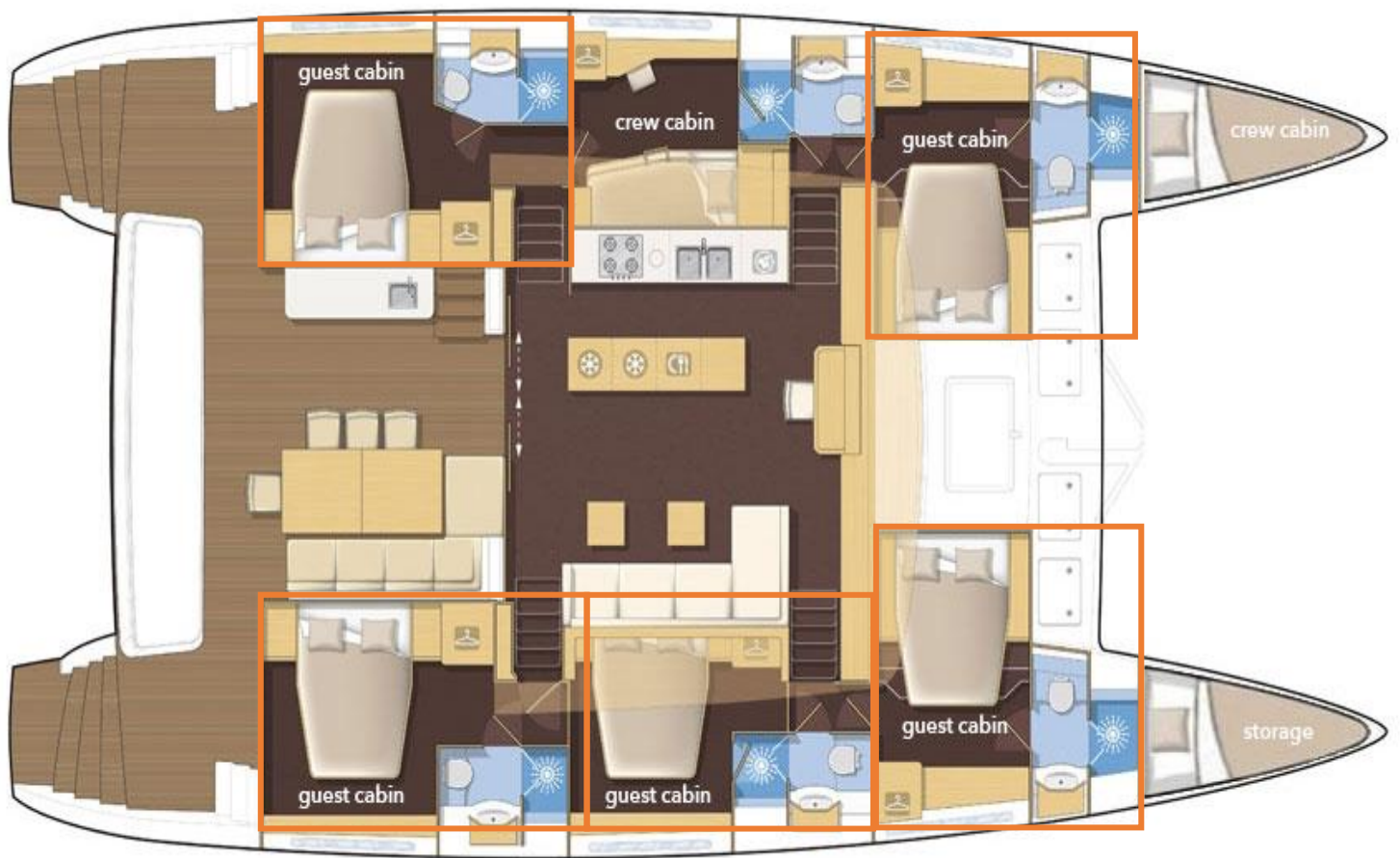
## INCLUDED IN THE PRICE:

INCLUDED IN THE PRICE: • 3 crew members (CAPTAIN & STEWARDESS & CHEF) • Water toys & equipment: fishing gear, towing ring, floating mats, tender: HIGHFIELD 460 & Honda 60 HP, snorkelling gear, water-skis, water tube, 2 x Stand-up paddle boards • Final cleaning, bedding, towels, beach towels & toiletry • WI-FI • Finest coffee types, selection of the best Croatian local products, kitchen and cleaning supplies • Daily preparation of breakfast, lunch and dinner • 13% VAT

# TECHNICAL SPECIFICATIONS & LAYOUT

<b>NAME</b> Adriatic Lion	<b>MODEL</b> Lagoon 620	<b>TYPE</b> Catamaran	<b>PRODUCTION YEAR</b> 2018	<b>PROPULSION</b> 2 X 150 HP
------------------------------	----------------------------	--------------------------	--------------------------------	---------------------------------

## The Layout



### Berth dimensions

160 cm x 205 cm x 120 cm

18,90 m

Length over all

10,00 m

Beam

33,300kg

Displacement

1,55 m

Draught

5/10

Cabins / Berths



## LAGOON EXPERTISE

- infusion-moulding for increased weight saving (important for a catamaran), an optimal structure, and greater protection for the environment and shipbuilders
- interior woodwork in Alpi® reconstituted wood, a sustainable source that comes in a choice of finishes: light oak or teak
- vertical glazing for better protection against the sun and optimal space and height below deck
- gull-wing bridge deck with two steps for greater comfort in heavy seas
- VPLP design: performance under sail guaranteed!

## ABOVE DECKS

- double helm station provides perfect visibility when setting sail or manoeuvring
- a functional flybridge that can also accommodate visitors thanks to separate crew and reception areas
- a large sun-deck forward
- forward and aft cockpits: a private area or open to guests, depending on your mood
- perfectly designed transom platforms for easy access to the sea when bathing or boarding a dinghy
- ease of movement around the boat thanks to flush deck panels and wide side decks that make for a generously proportioned boat with a practical design
- saloon and cockpit are beautifully integrated and include a "wet bar", areas for lazing around, and the option of taking meals inside or out without having to make any adjustments



## BELOW DECKS

- immense saloon with clearly defined dining, relaxing, sitting and navigation areas
- lateral galley in the port hull includes direct access to the saloon and a separate exit to the cockpit
- owner's cabin in the starboard hull with private sitting area and direct access to the cockpit
- luxurious, well-designed cabins with side access to beds, washrooms with separate showers, plenty of storage space, separate heads in the owner's washroom
- large hull windows and picture windows in the galley and aft starboard cabin give plenty of natural light
- indirect lighting in saloon and cabins provides softer light and the saloon windows can be fitted with blinds
- engine compartments are far from the living areas and perfectly insulated.

GUEST CABIN.



GUEST CABIN.



# SAILING DESTINATION

New destinations every day. Deserted beaches. Clandestine hangouts. Your own playground on the water. Some experiences can only be achieved with a yacht. Discover everything that the Adriatic has to offer, from the old city of Dubrovnik and Korcula, night life of Split & Hvar, waterfalls near Sibenik, sea organs in Zadar, to hidden coves on Kornati Islands. One thing is certain - You will embark on a beautiful adventure, no matter which destination you choose.



**BESPOKE SAILING HOLIDAY\*** Island-speckled coastline at your hand, no matter in which direction you are sailing. Enjoy crystal clear waters off your private floating hotel.



RELAX. SAIL. DISCOVER...

CUISINE ON BOARD.



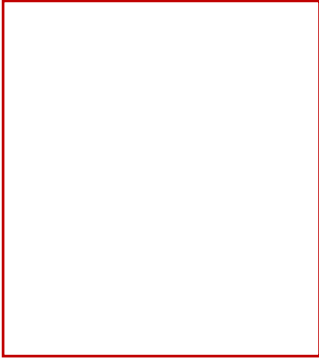
*Experience gastronomic and oenological excellence aboard tailored to your preferences...*







# CREW PROFILE:



## YOUR CAPTAIN

T.B.A

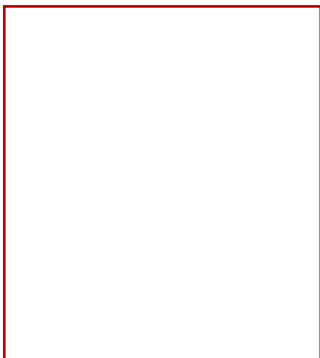


## YOUR CHEF

Eto was born on 23<sup>rd</sup> December 1977 in Split, Croatia. He attended Vocational School for Tourism and Hospitality in Split in the period between 1992 and 1995. Later, he attended a six-month course “Mediterranean Cuisine Chef Specialization” at Open University Zizic in Omis in the period between October 2013 and February 2014.

With over 20 years of experience working as a Chef, Eto has a lot to offer. He is a hardworking, responsible, and highly professional.

Over the years of training, he become a passionate and experienced pâtissier. Eto regularly gives culinary education alongside chefs like Dragan Grbic, Hrvoje Zirojevic and Mladen Mustra. His specialities include Mediterranean and International cuisine.



## YOUR STEWARDESS

T.B.A.



LAGOON 620  
OPAL

