



S/Y ASTORIA







Fore deck seating area



Aft seating area





Fly bridge



Fly bridge with hardtop bimini



Fly bridge sunbeds



Aft bathing platform



Aft arial view











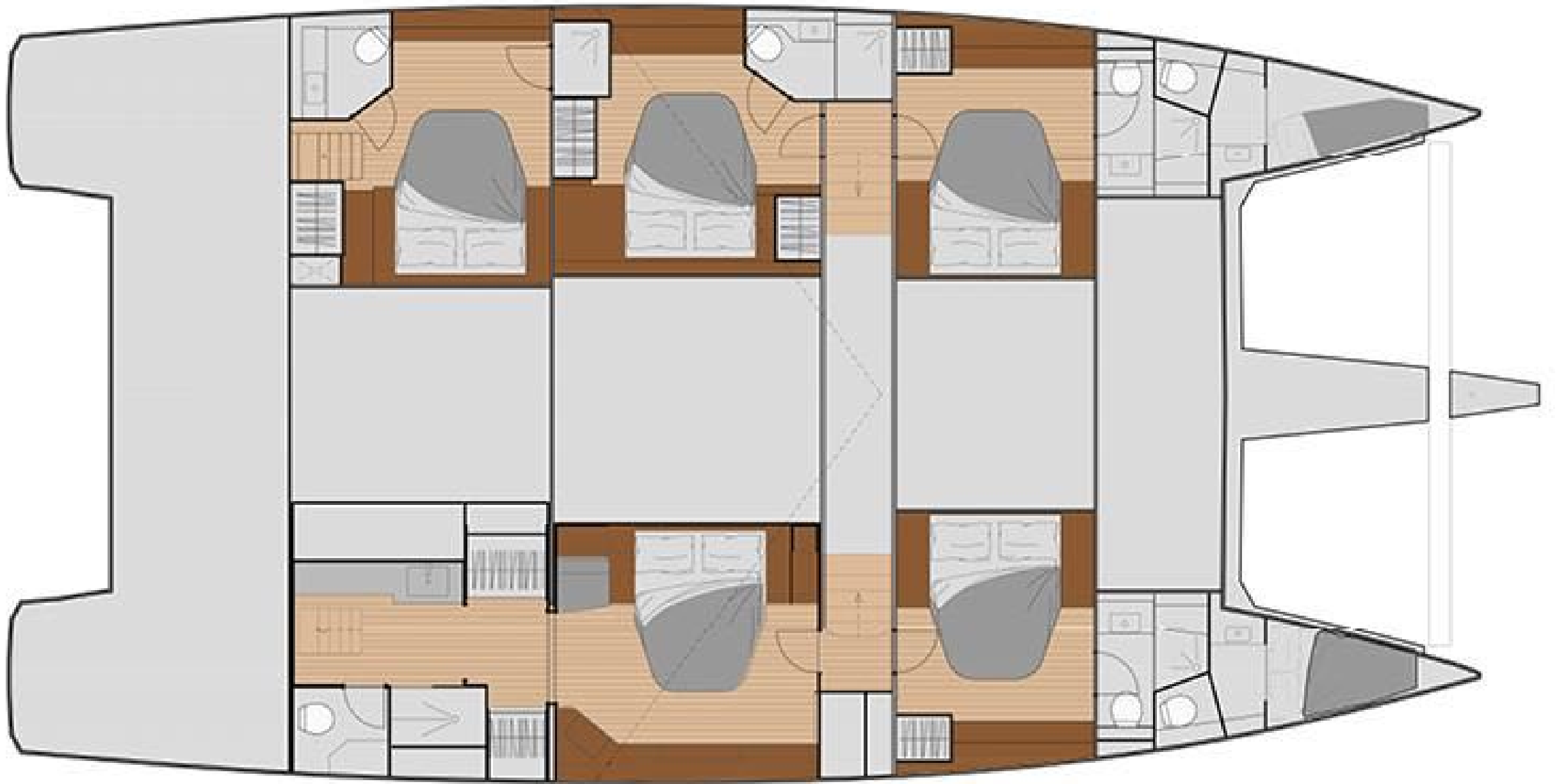












Length 18.78 metres (18' 78")

Beam 9.46 metres (31' 04")

Draft. 1.65 metres (5' 41")

Number of Guests. 10

Number of Crew. 3

Built. 2021

Builder. Fountaine Pajot

Naval Architect. Berret-Racoupeau Design

Flag. Greek

Hull Construction. GRP

Hull Configuration. Multi hull

Air conditioning, WiFi connection on board

A flybridge with breath taking dimensions... the largest in its category! Achieving the perfect blend of space and intimacy, S/Y ASTORIA will enchant you and inspire **sailing experiences** that bring friends or family together for unforgettable moments.

S/Y ASTORIA has been carefully designed to create spaces that cater for the most lively social gathering to the most relaxing moments of solitude. Its expansive 27,5m² cockpit, decadent foredeck with modular sunbathing stations, its 30m² flybridge, and its generous cabins all provide opportunities to engage or reflect in dynamic or more peaceful settings. Inspiring social unity with its generous and refined living areas, and epicurean galley that opens onto the saloon, S/Y ASTORIA embodies the French way of life that celebrates the philosophy of *carpe diem*.

Enjoy all the pleasures of sailing and have an amazing time on board S/Y ASTORIA.

ACCOMMODATION

Number of Guests. 10

Number of Cabins. 5

Cabin Configuration

One master cabin and four double cabins all with ensuite facilities

EQUIPMENT

Engines 2 X 150 HP Volvo D3

Cruising Speed. 10 knots

Fuel Consumption. TBA Litres/Hr

AMMENTIES

TV & Video in Saloon

Wine cellar

Planche grill

Master cabin with TV

WATERSPORTS

Tenders + Toys

Tender: TBA

2 X paddle boards

1 X kayak

Water ski (adult and children

Wakeboard

Fishing gear

Towable

